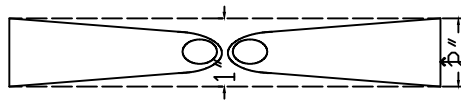


DESIGN OF SEWADAL UNIFORM

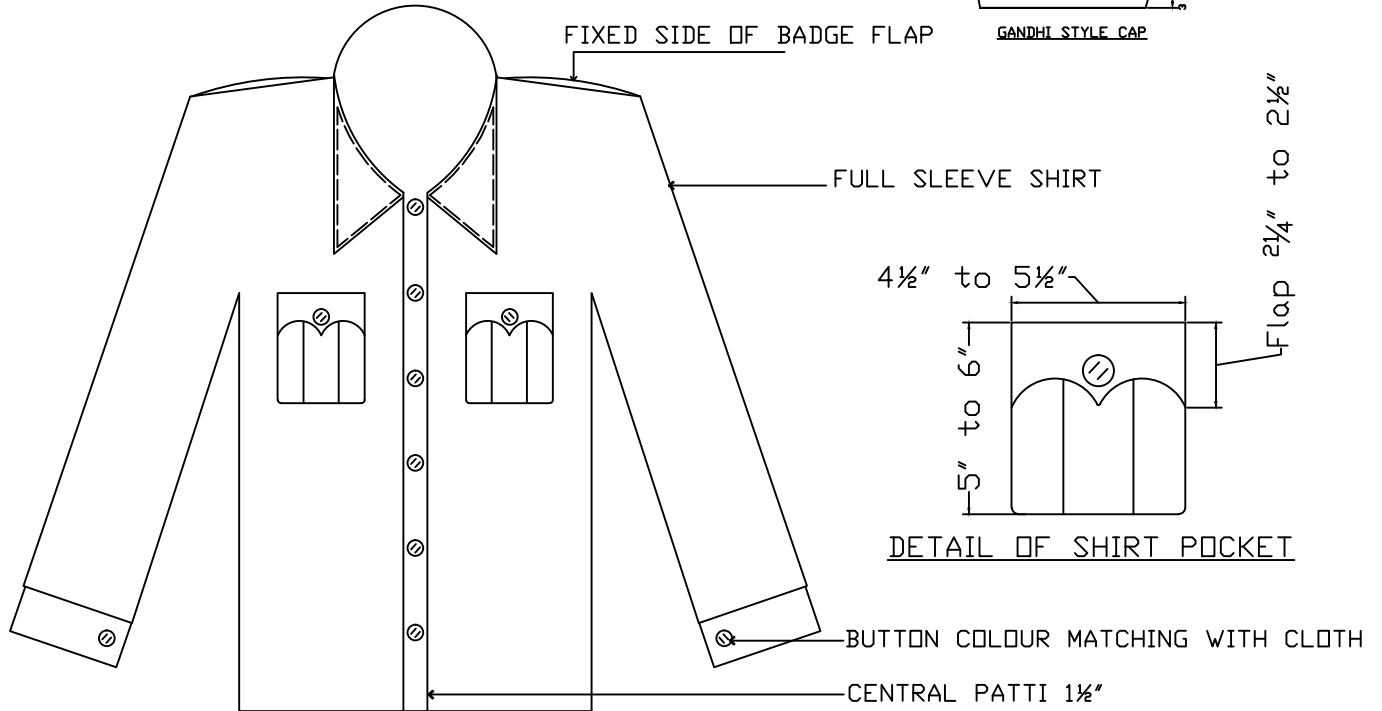
CLOTH : KHAKI TERRICOT CLOTH OF CHINAR MILL



DETAIL OF SHOULDER BADGE FLAP

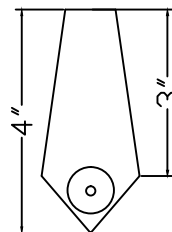
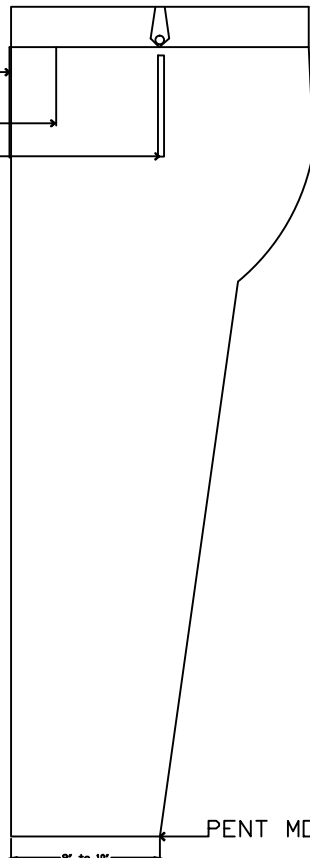


GANDHI STYLE CAP

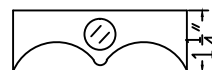


SHOES :WHITE CANVAS P.T. SHOES
SOCKS :PLAIN BLACK

CREEZE PLATE
SINGLE PLATE
STRAIGHT POCKET



DETAIL OF BELT LUPE



BACK POCKET FLAP